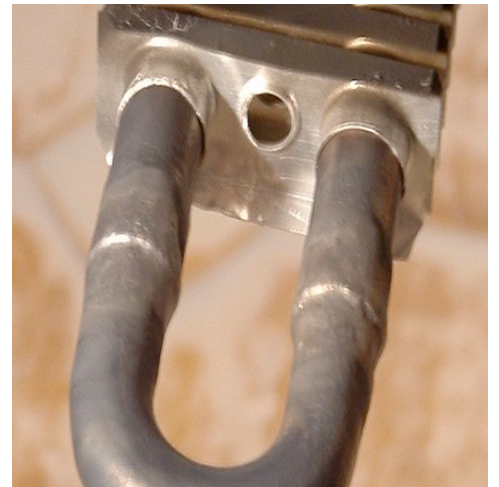
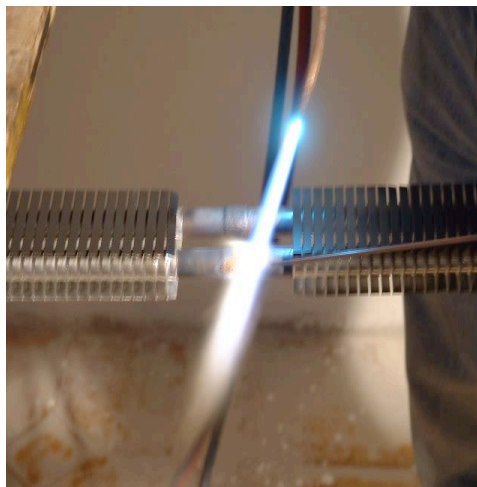
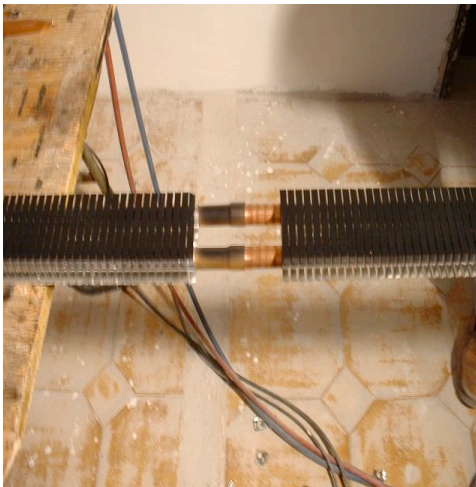
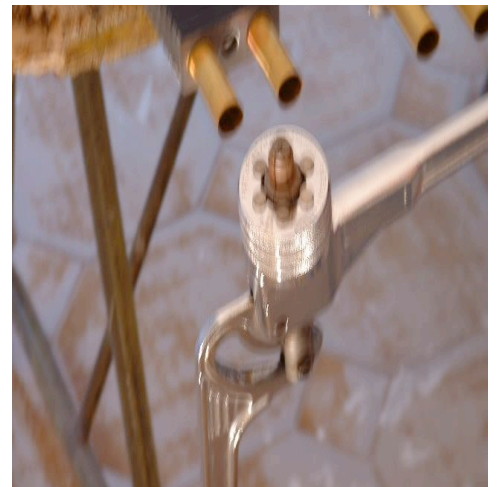


- Place the terminal (art OS) at the beginning of the room and screw to the wall.
- Measure height from the floor and run a chalk line (using bracket – Art OT)
- Measure the distance between each bracket (art OT) 50-60 cm
- The THERMODUL system is available in 2.5 m lengths. For wall longer than 2.5m ensure that a bracket is placed where the 2 sections meet.
- The THERMODUL system can be cut to measure on site with chop saw (aluminium blade)



- The heating core (art KA) is supplied in lengths of 2.5m
- It can be cut to measure with saw or chop saw (aluminium blade).
- The copper pipe can be expanded to 16mm and inserted into the next unit.
- ½" solder joints can be used as well as push fit joints.
- The corner elbow (art OC) needs to be soldered for best result.
- The End elbow (art OB) needs to be soldered for best result